



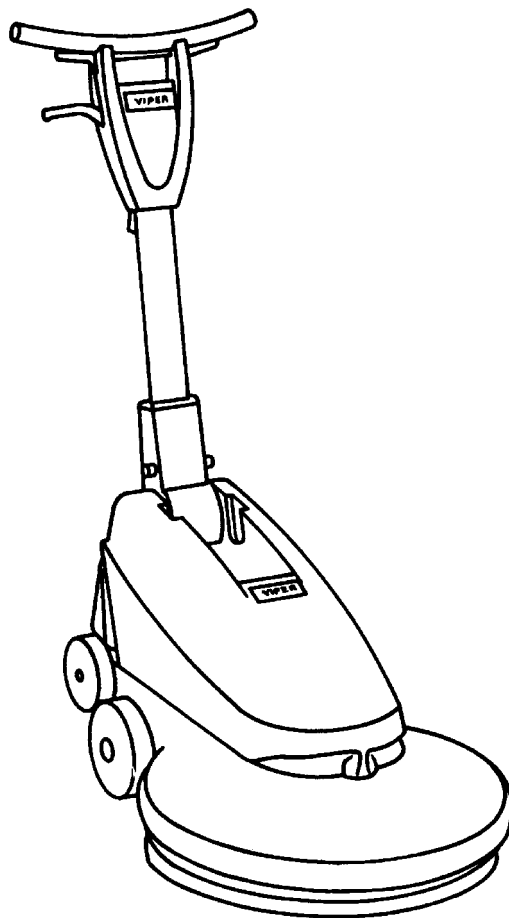
www.viperind.com

## DRAGON SERIES HIGH SPEEDS

# OWNERS MANUAL

**IMPORTANT: READ OWNERS MANUAL CAREFULLY**

**Please fill out & return your warranty card!**



MODEL# DR1500H

SERIAL#                     

VIPER INDUSTRIAL ESTATE  
LIANG BIAN, LIAO BU  
DONG GUAN, GUANG DONG  
CHINA

TEL : 86 769 83283988  
FAX: 86 769 83283018

VIPER ...exceptional  
value

REV.00(05-07)  
VF41528HK



**CONGRATULATIONS** on your purchase of a Viper product, and welcome to the V.I.P. family. We appreciate your business and will do everything in our power to keep you happy with your purchase for many years to come.

As part of the V.I.P. family, you are entitled to the best protection by one of the most comprehensive warranties in the industry.

Thank-you for purchasing Viper products!

Tom Vander Bie, CEO

---

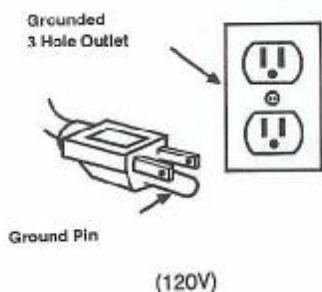
## **TABLE OF CONTENTS**

<b>Safety Precautions</b>	<b>1</b>
<b>Machine Operation</b>	<b>2</b>
<b>Machine Maintenance &amp; Storage</b>	<b>2</b>
<b>Parts List</b>	<b>3-8</b>
<b>Wiring Diagram</b>	<b>9</b>



## **SAFETY PRECAUTIONS**

**!!! This machine must be grounded!**  
Grounding provides the path of least resistance for electrical current. To reduce the risk of electrical shock should the machine malfunction, the machine has a special grounding plug. Do not remove the ground pin under any circumstances!



This machine is intended for commercial use. It is constructed for use in an indoor environment and is not intended for any other use. Use only recommended accessories.

All operators shall read, understand and exercise the following safety precautions:

### **1) Do not operate machine:**

- Unless trained and authorized
- Unless you have read and understand operators manual
- In flammable or explosive areas.
- With damaged cord or plug.
- If not in proper operating condition.
- In outdoor areas.
- In standing water.
- With the use of extension cords.

### **2) Before operating machine:**

- Make sure all safety devices are in place and operate properly.

### **3) When using machine:**

- Do not run machine over cord.
- Do not pull machine by cord or plug.
- Do not pull cord around sharp edges or corners.
- Turn power switch to "off " prior to unplugging machine.
- Do not unplug by pulling on the cord.
- Do not stretch cord.
- Do not handle plug with wet hands.
- Keep cord away from heated surfaces.
- Do not pick up burning or smoking debris such as cigarettes, matches or hot ashes.
- Report machine damage or faulty operation immediately.

### **4) Before leaving or servicing machine:**

- Turn off machine.
- Unplug cord from outlet.

### **5) When servicing machine:**

- Unplug cord from outlet.
- Use manufacturer supplied or approved replacement parts.

# Operation of High Speed Floor Machine

- \* Read operators manual thoroughly prior to operating or servicing this machine.

## **GENERAL USE**

- 1] Remove any obstructions or other obstacles in the area which is to be cleaned.
  - 2] Place handle in upright position and tilt machine back until handle rests on the floor.
- \* **Be sure the machine is not plugged into an outlet.**
- 3] Remove the pad center gripping device by unscrewing the thumbscrews.
  - 4] Place appropriate burnishing pad on pad driver and re-attach the center gripping device.
  - 5] Place machine back into its upright position.
  - 6] Plug power cord into grounded outlet.
- \* **Do not use an extension cord in conjunction with the standard power cord.**
- 7] Adjust height to a comfortable operating position.
  - 8] To start the machine, push on the Red handle mounted safety switch and squeeze any of the two switch levers.
  - 9] When the machine is in operation, both hands should be placed on the handle.
  - 10] To stop the machine at any time, simply release the switch lever, and the machine will stop automatically.

## **MAINTENANCE**

To keep the machine performing well for many years, please follow the following maintenance procedures.

- \* **Always confirm that the machine is unplugged prior to performing any maintenance or repairs.**

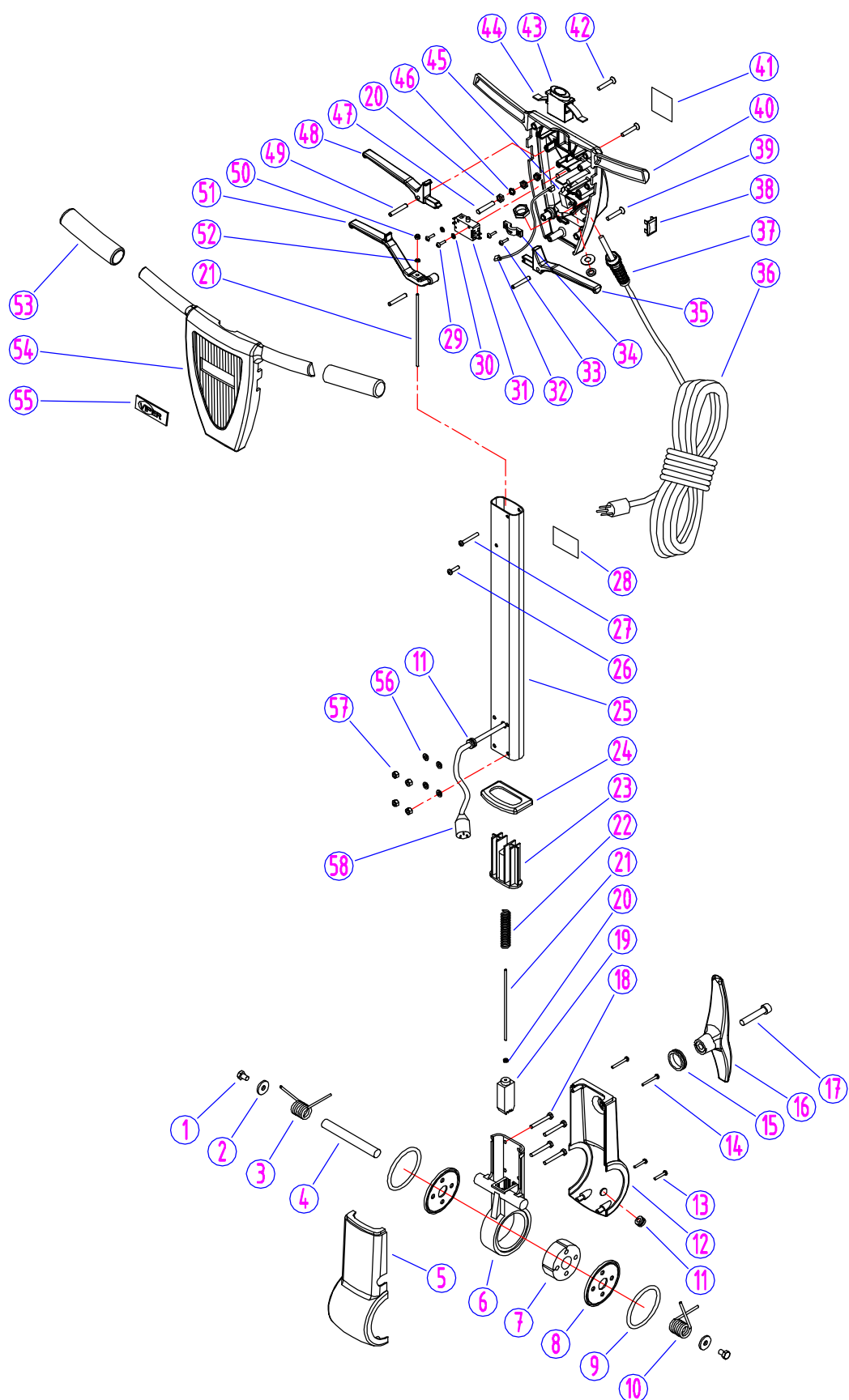
- 1] Unplug machine as soon as you are done using it.
- 2] Tilt machine back and remove pad driver or brush.
- 3] Clean the outside of the machine with a mild cleaner.
- 4] Check power cord for any damage. If any damage is detected, replace the cord immediately.
- 5] Lubricate wheels with a water resistant lubricant every month.
- 6] Check machine for loose or missing nuts and bolts, and replace as necessary.
- 7] If the machine is used in a dusty environment, you may remove the motor cover and blow the motor clean with compressed air. This will allow for good ventilation and help the motor run cooler.

## **STORAGE**

- 1] Unplug machine from power source.
- 2] Store in upright position in a dry area.

## PARTS LIST

### HANDLE GROUP FOR DR1500H



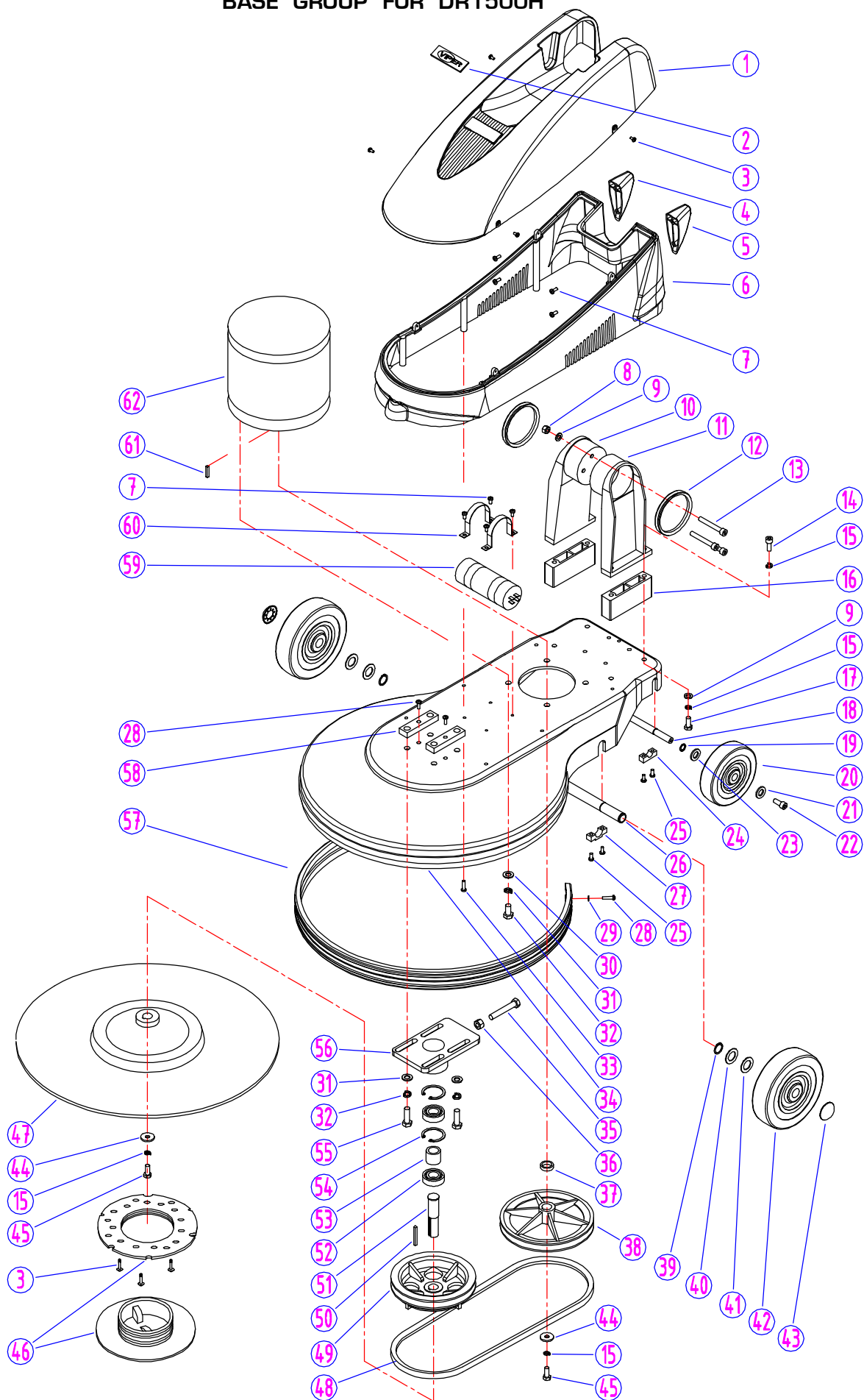
## **HANDLE GROUP FOR DR1500H**

<b>DIA NO</b>	<b>PART NUMBER</b>	<b>DESCRIPTION</b>	<b>NO REQ'D</b>
1	VF14105	SCREW, M8 x 12	2
2	VF13515	WASHER, PLAIN	2
3	VF52112	SPRING, RIGHT	1
4	VF52113	AXLE	1
5	VF47009	FRONT COVER,SEAT,GEAR	1
6	VF47029	SEAT,GEAR	1
7	VF52016	GEAR	1
8	GV40227	WASHER,NYLON	2
9	GV40228	"O" RING,GEAR SEAT	2
10	VF52111	SPRING, LEFT	1
11	VF50120	GROMMET	2
12	VF47015	REAR COVER,SEAT,GEAR	1
13	VF14080	SELF-TAPPING SCREW,M4x25	2
14	VF14087	SELF-TAPPING SCREW,M4x35	2
15	VF47046	SEAL RING	1
16	VF47045	HOOK,CABLE	1
17	VF13616	HEX SCREW,M10x55	1
18	GT13019	HEX SCREW,M6x45	4
19	VF52015	INSERT,LEVELING	1
20	GT13013	NUT,M4	4
21	VF52117	ROD LEVELING	1
22	VF47007	SPRING,LEVELING	1
23	VF47033	RETAINER	1
24	VF47008	SEAL,TUBE	1
25	VF52116	TUBE	1
26	VA13474	SCREW,M5x16,PH	1
27	VA13476	SCREW,M5x40,PH	1
28	VF40994	SERIAL TAG	1
29	VF14212	SCREW,M3x25,PH	2
30	VF13511	WASHER,LOCK,INTERNAL TOOTH	2
31	VF99023	SWITCH ASSY,20A,250V	1
32	VF45124	JUMP WIRE	1
33	VV13650	SCREW, M4 x 10, PH	2
34	VF48309	BLOCK, HANDLE CABLE	1
35	VF46703	LEVELING HANDLE, SWITCH, LEFT	1

## **HANDLE GROUP FOR DR1500H**

<b>DIA NO</b>	<b>PART NUMBER</b>	<b>DESCRIPTION</b>	<b>NO REQ'D</b>
36	VF45121A	CORD,POWER SUPPLY,H05 RR-F 1.5mm <sup>2</sup> /3C	1
37	VF44005	STRAIN RELIEF,CORD	1
38	VF52019	COVER, SOLUTION LEVER	1
39	VF14226	SCREW, FH, M6X35	2
40	VF52118	REAR COVER	1
41	VF40994	READ MANUAL LABEL	1
42	VF14218	SCREW,PH, M6x40	2
43	VF46705	SAFETY BLOCK	1
44	GV40218	SPRING,SAFETY BLOCK	1
45	VF99010	CIRCUIT BREAKER	1
46	VF13527	EXTERNAL TOOTH,WASHER, $\phi$ 4	1
47	VF13526	HEX SOCKET SCREW,M4 x 30	1
48	VF46704	LEVELING HANDLE, RIGHT, SWITCH	1
49	VF48306	PIN, LEVER	3
50	GT13014	NUT, M4, NYLON INSERT	1
51	VF46707	LEVELING HANDLE,ROD	1
52	GT13017	BIG WASHER, PLAIN, $\phi$ 4 x $\phi$ 16	1
53	VF46706	HANDLE GRIP	2
54	VF46701	FRONT COVER,HANDLE HOUSING	1
55	VF47035A	"VIPER" LOGO	1
56	VF13600	WASHER,PLAIN, $\phi$ 6	4
57	VF13502	NUT,M6,NYLON INSERT	4
58	VF45120	CABLE,HANDLE, SJTW 14/3C	1

BASE GROUP FOR DR1500H





## **BASE GROUP FOR DR1500H**

<b>DIA NO</b>	<b>PART NUMBER</b>	<b>DESCRIPTION</b>	<b>NO REQ'D</b>
1	VF52102A	UPPER COVER	1
2	VF47035A	"VIPER" LOGO	1
3	VA13484	SELF-TAPPING SCREW,M4x12	7
4	VF52114	PLASTIC STAND,RIGHT	1
5	VF52115	PLASTIC STAND,LEFT	1
6	VF52101A	LOWER COVER	1
7	VV20509	SCREW,M5x10,PH	8
8	VF13503	NUT,M8,NYLON INSERT	3
9	VF13524	WASHER,PLAIN	7
10	VF52104A	RIGHT,ARM	1
11	VF52103A	LEFT,ARM	1
12	VF47026	SEAL,UPPER COVER	2
13	GT13016	SCREW,M8x60,HEX SOCKET	3
14	VF14088	SCREW,M8x25,HEX SOCKET	4
15	VF13519	WASHER,LOCK, $\phi$ 8	10
16	VF52105	RISER,ARM	2
17	VF13607	SCREW,M8x25	4
18	VF52011	AXLE,TRANSPORTATION	1
19	VF13520	RETAINING RING,EXTERNAL, $\phi$ 12	2
20	VF52017	WHEEL,5"	2
21	VF13666	WASHER,PLAIN, $\phi$ 12	2
22	VF44012	SCREW,M5 x 12.7	2
23	VF50119	WAVING WASHER, $\phi$ 12	2
24	GV40235	CLAMP BLOCK,AXLE	2
25	VV13621	SELF-TAPPING SCREW,ST5x20	8
26	VF52010	FRONT AXLE	1
27	VF47038	CLAMP BLOCK,AXLE	2
28	VA13474	SCREW,M5x16,PH	4
29	VF13474A	WASHER,PLAIN, $\phi$ 5 x $\phi$ 16	2
30	VF13517	WASHER,PLAIN, $\phi$ 10	8
31	VF13518	WASHER,LOCK, $\phi$ 10	8
32	VF13608	SCREW, M10 x 25	4
33	GT13004	SELF-TAPPING SCREW,M5x20	7
34	VF52003	FRAME	1
35	VF14009	HEX SCREW,M10x65	1

## **BASE GROUP FOR DR1500H**

<b>DIA NO</b>	<b>PART NUMBER</b>	<b>DESCRIPTION</b>	<b>NO REQ'D</b>
36	VF14005	NUT,M10	1
37	VF52008	SPACER	1
38	VF52009D	DRIVING PULLEY	1
39	VF14004	RETAINING RING,EXTERNAL, $\phi$ 19	2
40	VF50123	WASHER, $\phi$ 19	2
41	VF47027	WAVING WASHER, $\phi$ 19	2
42	VF47055	WHEEL,160mm	2
43	VA96851	CAP,AXLE	2
44	VF52021	WASHER,PLAIN	2
45	GT13018	HEX SCREW,M8x30	2
46	VF99003A	BIG MOUTH	1
47	VF99024D	PAD HOLDER	1
48	VF14079	BELT, 43"	1
49	VF52004D	DRIVEN PULLEY	1
50	VF52001	KEY	1
51	VF52005	DRIVEN SHAFT	1
52	VF14075	BEARING, 60042RS	2
53	VF52006	SPACER	1
54	VF14003	LOCK	2
55	VF14007	HEX SCREW,M10x32	4
56	VF52007	MOUNTING PLATE,DRIVEN SHAFT	1
57	VF52002	BUMPER	1
58	VF52106	MOUNTING PLATE	2
59	VF999846	RUNNING CAPACITOR	1
60	VF52110	CLAMP, CAPACITOR	2
61	VF99920-1	KEY	1
62	VF99920	MOTOR,220V 1500R.P.M	1

# Wiring Diagram

## DR1500H

